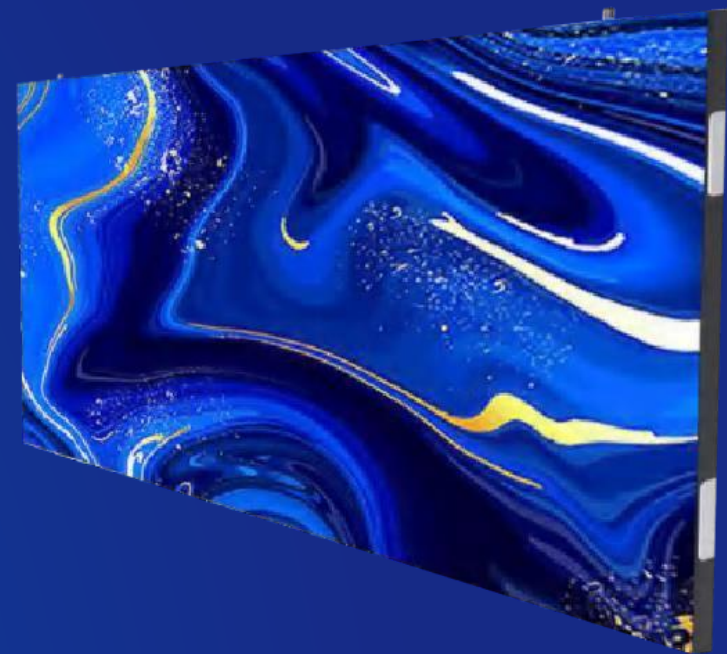


[RY Series]

New generation of ultra-thin integrated cabinet

P1.2/P1.5/P1.8/P2.0/P2.5



◆ **Product model**

Large box-

BRY012A1/BRY015A1/BRY018A1/BREY020A1/BREY025A1

Small box-BRY0012A2/BRY 015A2/BRY

018A2/BY020A2/BY025A2

◆ **Point spacing**

1.25/1.538/1.86/2.0/2.5 (mm)

- ◆ Box size 640X320X50 (minimum 19 mm)
320X320X50 (minimum 19 mm)

◆ **Module size**

320X160 (mm)

◆ **Product features**

Hard connection, ultra-thin three-in-one integrated complete machine shipment

◆ **Compliance**

Certification and shipment 100 consistent, compliance CCC, own brand private model complete machine

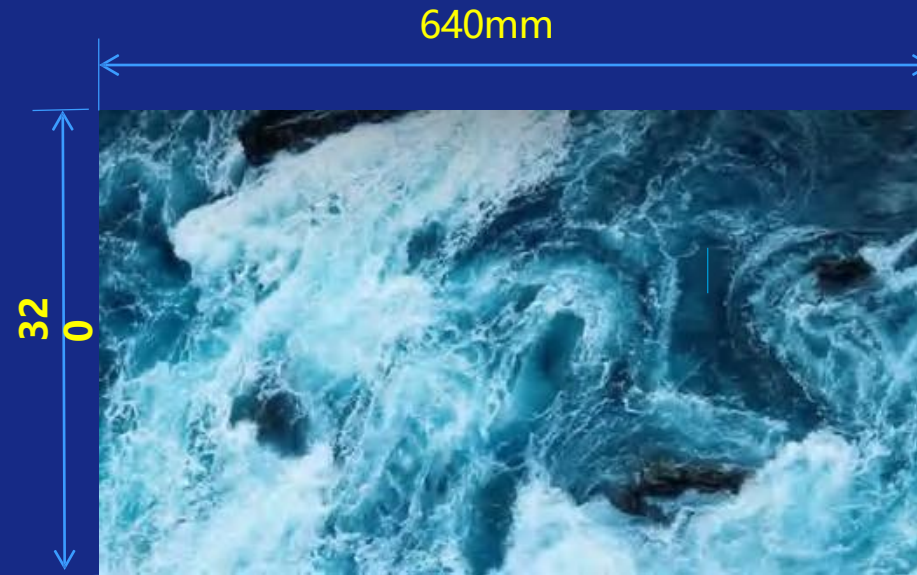
◆ **Low carbon and environmental^{0%} protection**

Complete machine weight ≤ 4 Kg, lead-free process in the whole process, low power consumption



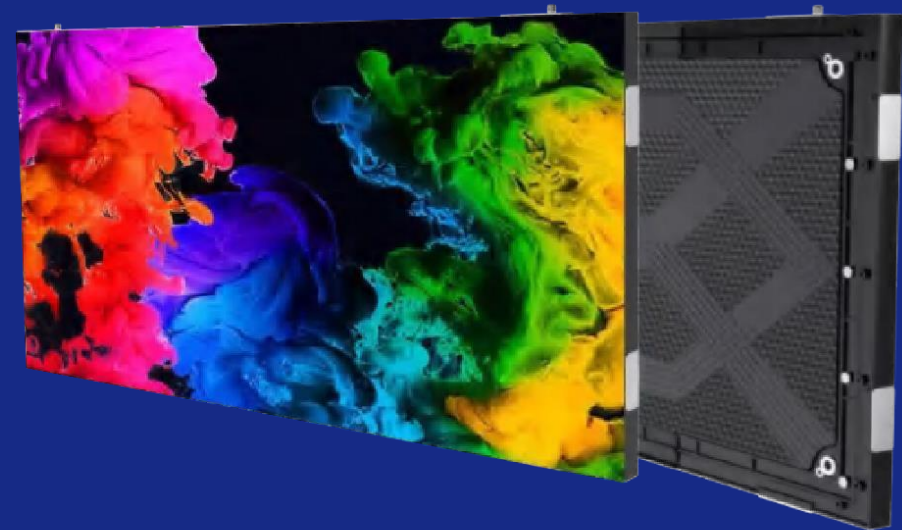
Extremely simple, low-carbon and environmentally friendly

Die casting frame, machining precision up to 0.1 mm



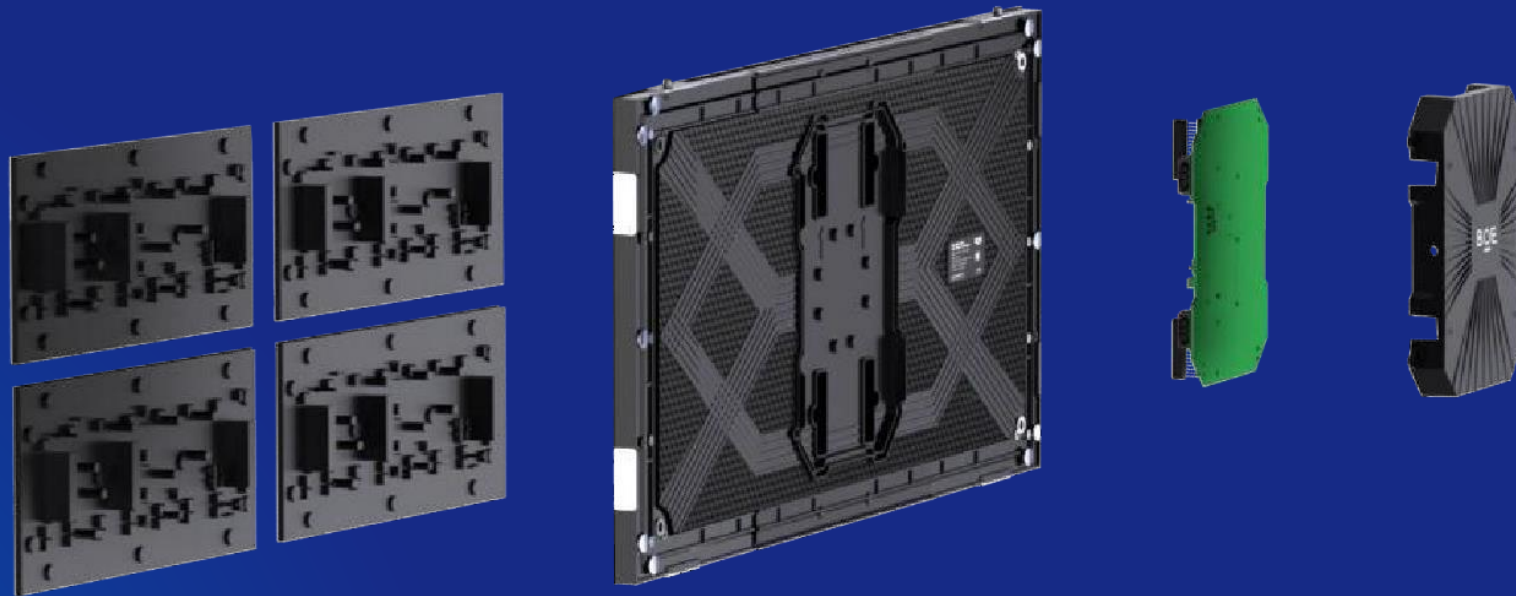
Thin and light construction (first die cast and PC hybrid process), high precision, optimized weight and cost to the extreme, single box ≤ 65 W

Thin and light body can be carried by one hand



The thickness of the whole machine is **50mm**,
The thinnest part is only **19mm**
The weight of the whole machine **≤4kg**

Turn complexity into simplicity, no worry about installation



- Completely pre-installed cabinet, installation efficiency increased 50%
- Hard connection, internal wireless material design, exquisite and concise
- Three-in-one integration of power supply + system + HUB, reducing fault possibilities

Wonderful performance of display quality



Ruiyi complete machine

Natural Gray-scale transition, exquisite and lifelike picture performance.

Support point-by-point correction for improving brightness. Elect Uniform and fidelity colour of LED.

VS

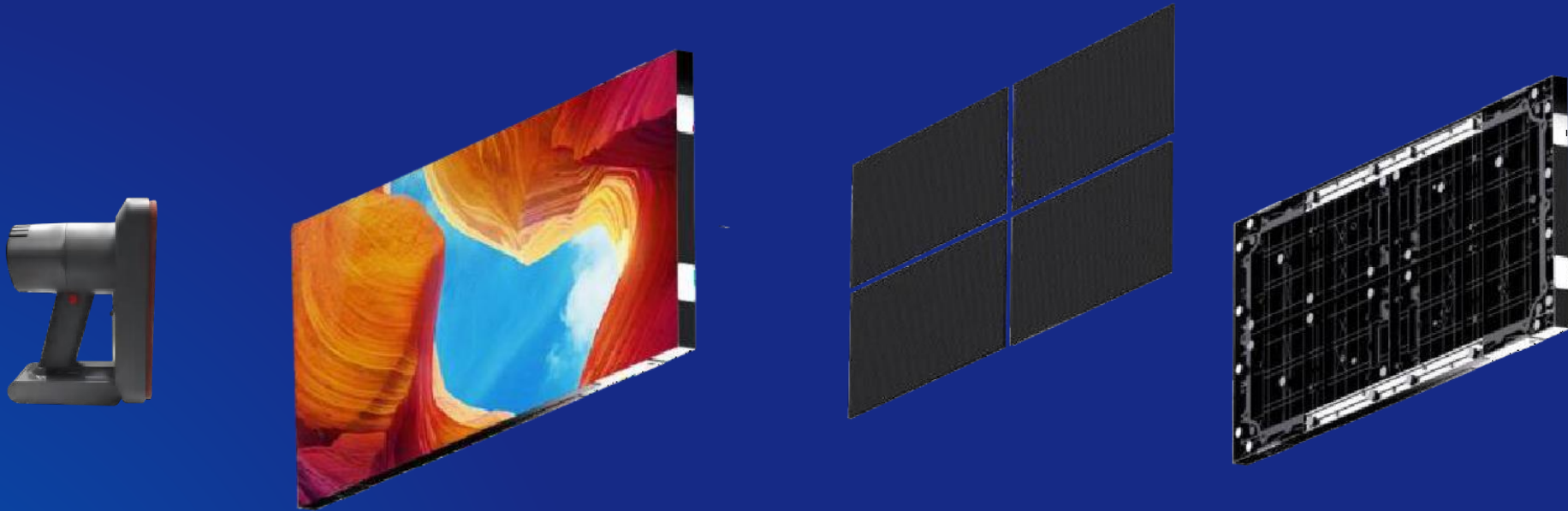


Channel Module

Poor picture uniformity and unnatural color transition.

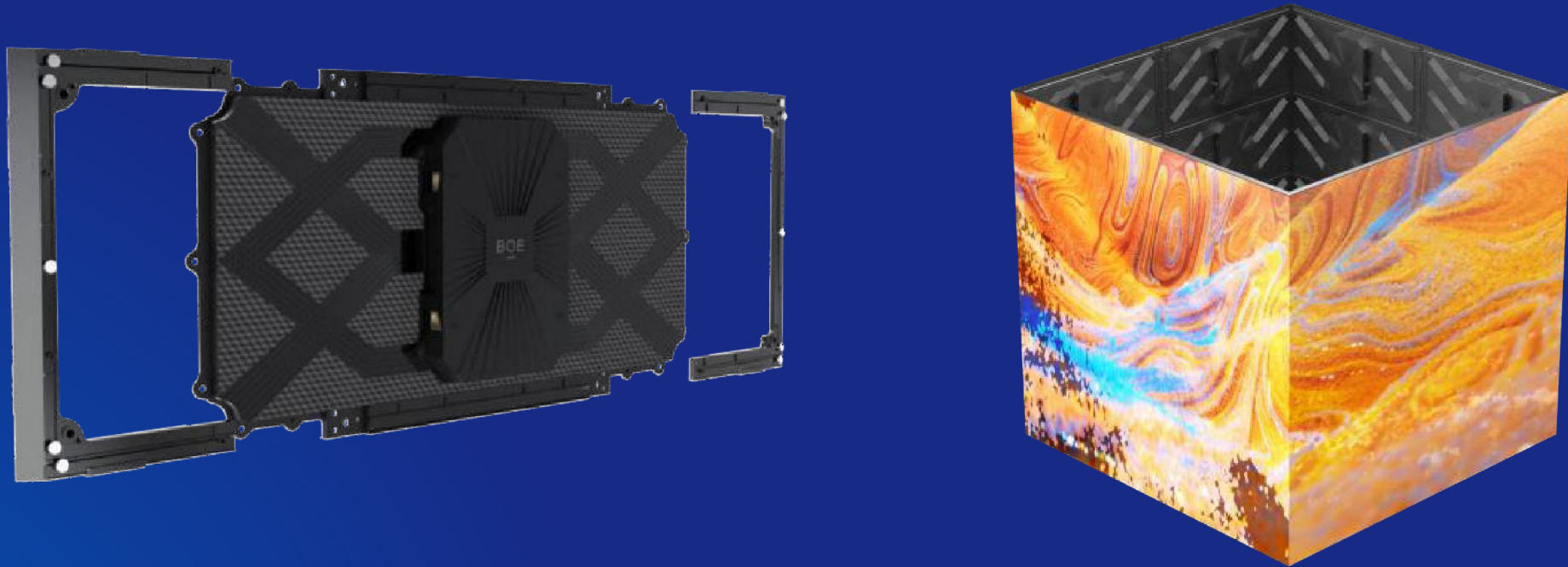
Indicators	Ruiyi complete machine	Traditional channel module
Drive scheme	S-PWM frequency multiplication	PWM or double latch
Refresh rate	≥3840Hz	≤3840/1920Hz
Number of gray scales	14bit	12-13bit
Low ash effect	Excellent	General
Photographic effect	Excellent	General

Installation and maintenance easily



Support front/back maintenance, front/back installation, hard connection design, easy module replacement steps

Compatible with 45 ° chamfer, anytime, anywhere



Optional 45 ° corner cut C frame, can also be replaced on the spot, instantly transformed into a right-angle assembly screen to flexibly match various application scenarios, a visual feast in seconds

CCC compliance integrated brand pre-assembled complete cabinet



Second to none in the industry

Overall dimension of Ruiyi 640 * 320

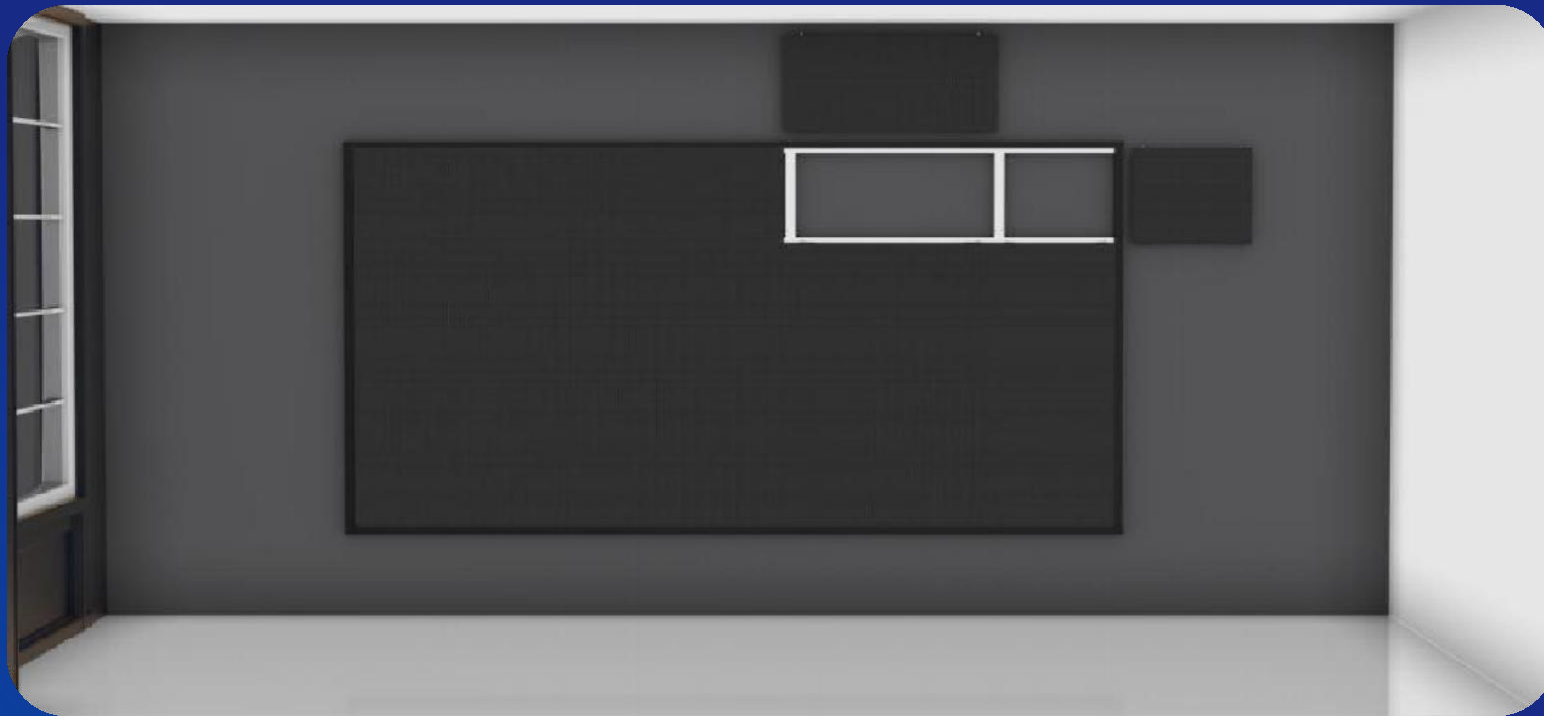
Can be installed by magnetic attraction or fixed connecting piece. The installation of the whole machine is convenient and high efficiency.

The flatness performance is good, which is easy to install large area fixed projects.

Channel module size 320 * 160

Large number of vertical steel structures. High cost and low installation efficiency. Poor product flatness. Only suitable for the project of module magnetic small screen.

Two sizes to maximize space



The industry's first 640 * 320 mm and 320 * 320 two machine size collocation, flexible selection

Wall hanging installation is as beautiful as murals



Integration with the environment, like a natural mural.

Full scene application is stable and reliable



Support various installation methods such as wall-mounted, wall-embedded, seat installation and hanging installation to meet the needs of various scenarios

Certificate report

CCC/CNAS/Energ
y



Specification parameters	BRY012A1	BRY015A1	BRY018A1	BRY020A1	BRY025A1
Pixel Pitch (mm)	1.25	1.538	1.86	2.0	2.5
Pixel density (dots/m ²)	640,000	422,500	288,906	250,000	160,000
Overall dimension (mm)	640 * 320 * 50/320 * 320 * 50 (only 19 mm at the thinnest point)				
Material of complete machine	Die cast aluminum + plastic bottom shell				
Unit weight (Kg)	≤4				
Color Processing Depth (Bit)	14Bit				
Refresh Frequency (Hz)	3840				
Drive mode	1/64	1/52	1/43	1/40	1/64
Brightness (CD/m ²)	≥ 450 (adjustable)				
Horizontal viewing angle (°)	150 (H) /130 (V)				
AC input voltage (V)	AC100~240±10%(50/60Hz)				
Maximum AC input power (W/m ²)	318W/m ²				
Typical AC input power (W/m ²)	105W/m ²				
Product protection grade	IP30				
Installation mode of the box	Front/rear mounting				
Maintenance mode of box body	Front/rear maintenance				

深度合作
协同开发
价值共创