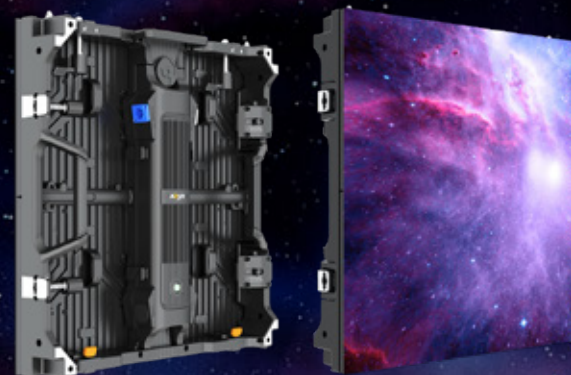


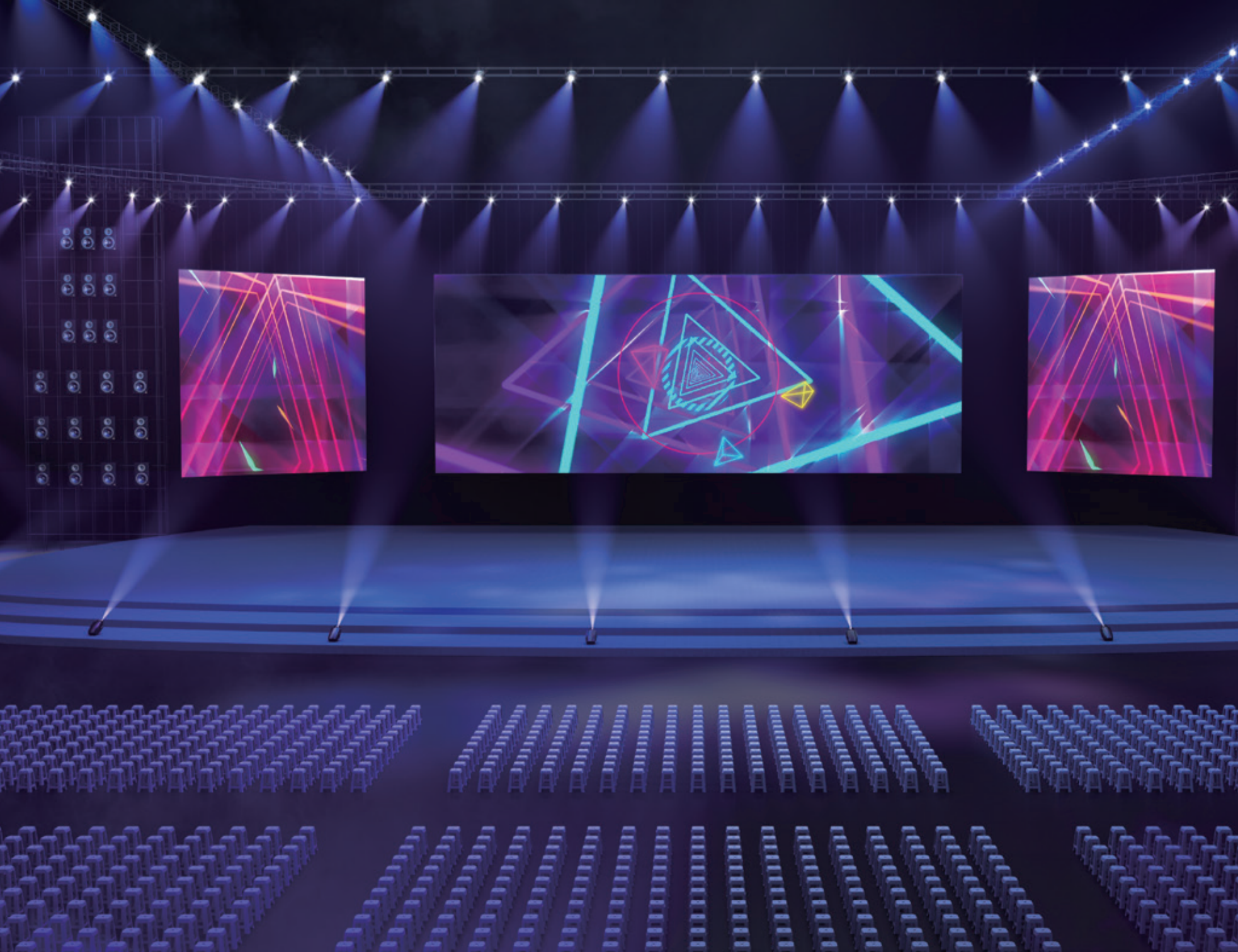


NEPTUNE SERIES

NT2.6 / NT2.9 / NT3.9W

Wise Choice, Big Stage







NT Series

NT2.6 / NT2.9 / NT3.9W



Lightweight design
Easier to operate



Indoor / outdoor
High brightness display



Edge protection
Anti-collision design



Creative shape
-7.5° to +10° adjustable



Cube-shaped display
Cube version panels



xR stage solution
For building backdrops



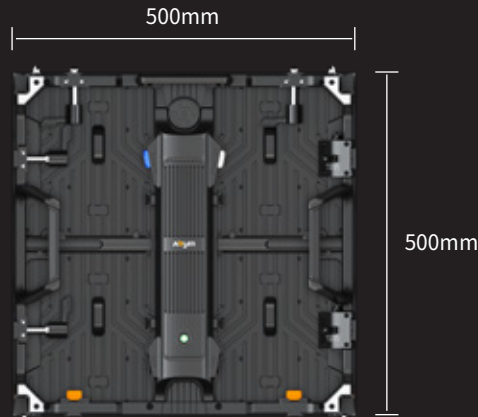
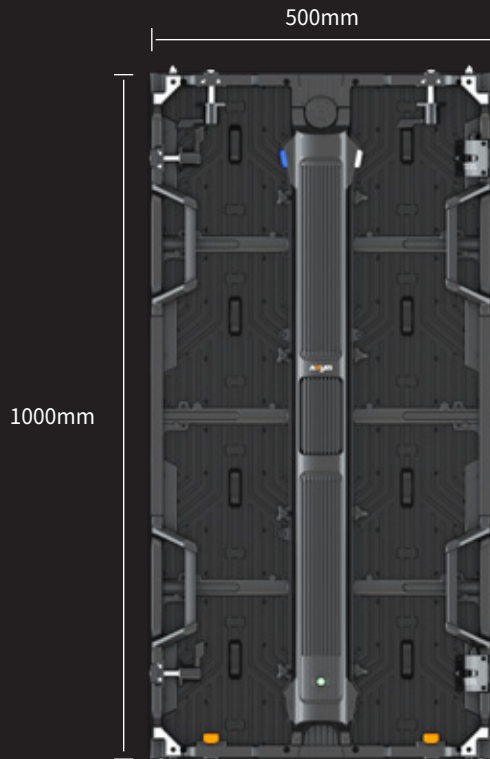
One-man installation
Easy and fast installation



Modular design
Full front and rear maintenance

Lightweight design

The NT series adopts a lightweight design to make the operation easier and labor-saving.



500*500mm indoor panel
≤ 7.5 kg



500*1000mm indoor panel
≤ 12.5 kg



Panel thickness
80 mm

*NT2.6 only provides 500*500mm panel

Amazing visual experience

Superior visual performance with high brightness and high refresh rate, ready to create stunning event moments at any time.



Low refresh rate

3840Hz high refresh rate



Indoor NT2.6 and NT2.9 brightness

1000nits



Outdoor NT3.9W brightness

4000nits

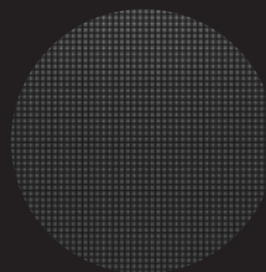
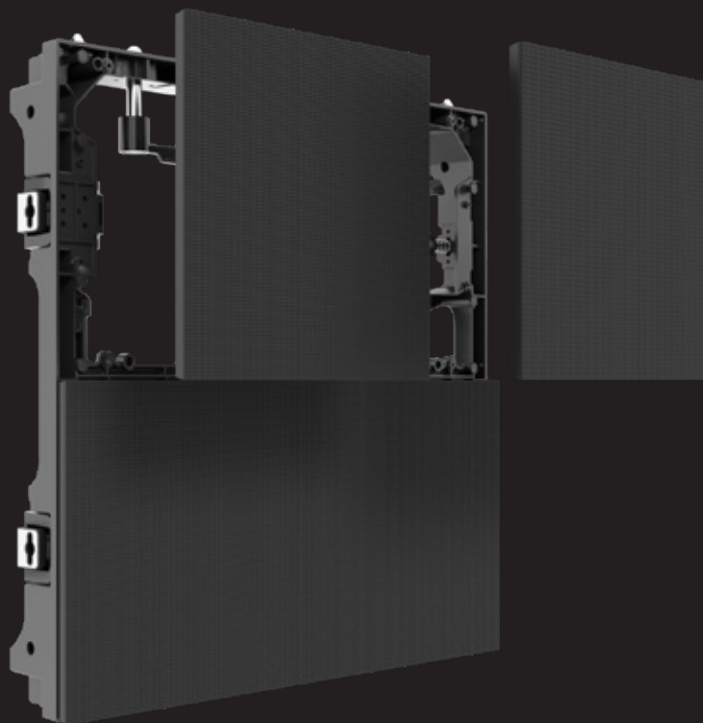


Refresh rate

3840Hz

Cost-effective platform design

The NT series adopts a platform design so that modules with different pixel pitches can be used on the same frame, which is convenient for customers to flexibly adjust the pixel pitch of the screen and further saves costs.



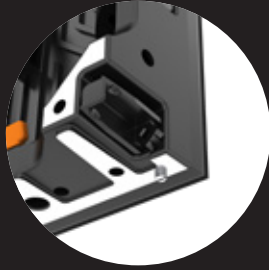
● 2.6mm



● 2.9mm

Considered anti-collision design

Adopts anti-collision design to avoid direct collision between LEDs and the ground, thereby effectively protecting the LEDs on the edge.



● Flip-over protective corner (For NT2.6 and NT2.9 standard version)



● Edge protrusion design

High-quality cable connectors

The NT series incorporates high-quality cable connectors for power and data transmission to achieve stable power and data signal transmission, and are equipped with high-quality cables to further reduce the failure rate.



● Indoor power box

Power twist cable connectors
for power supply



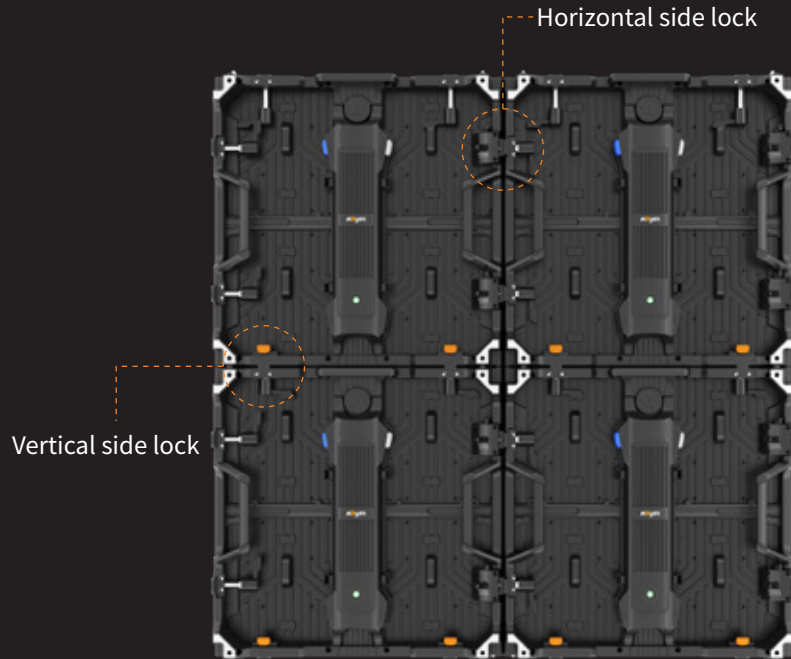
● Outdoor power box



Outdoor push lock network cable
connectors for data transmission

Fast one-man installation

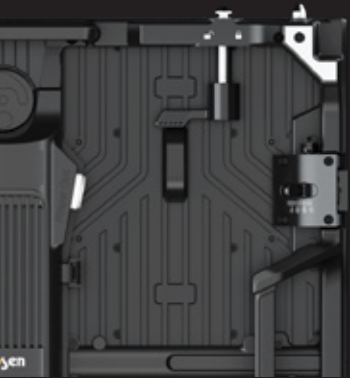
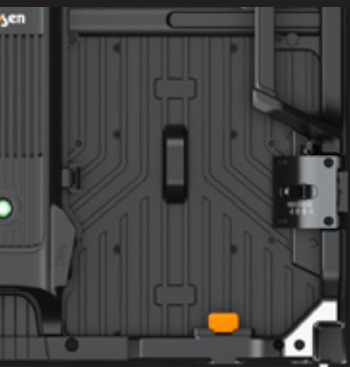
The NT series can be installed quickly by one person, thereby the installation and disassembly of the large screen can be easily completed in a short time.



Durable locking system

The tightly connected horizontal side lock can effectively improve the flatness between panels. And the firmly connected vertical side lock further enhances the security of the hanging screen.





Flexible mixed connection

500*1000mm and 500*500mm panels can be connected in the vertical direction. In this way, the screen size can be adjusted more flexibly.

Excellent curving capabilities

The NT series supports concave and convex connection to create various shapes and build a more creative stage.

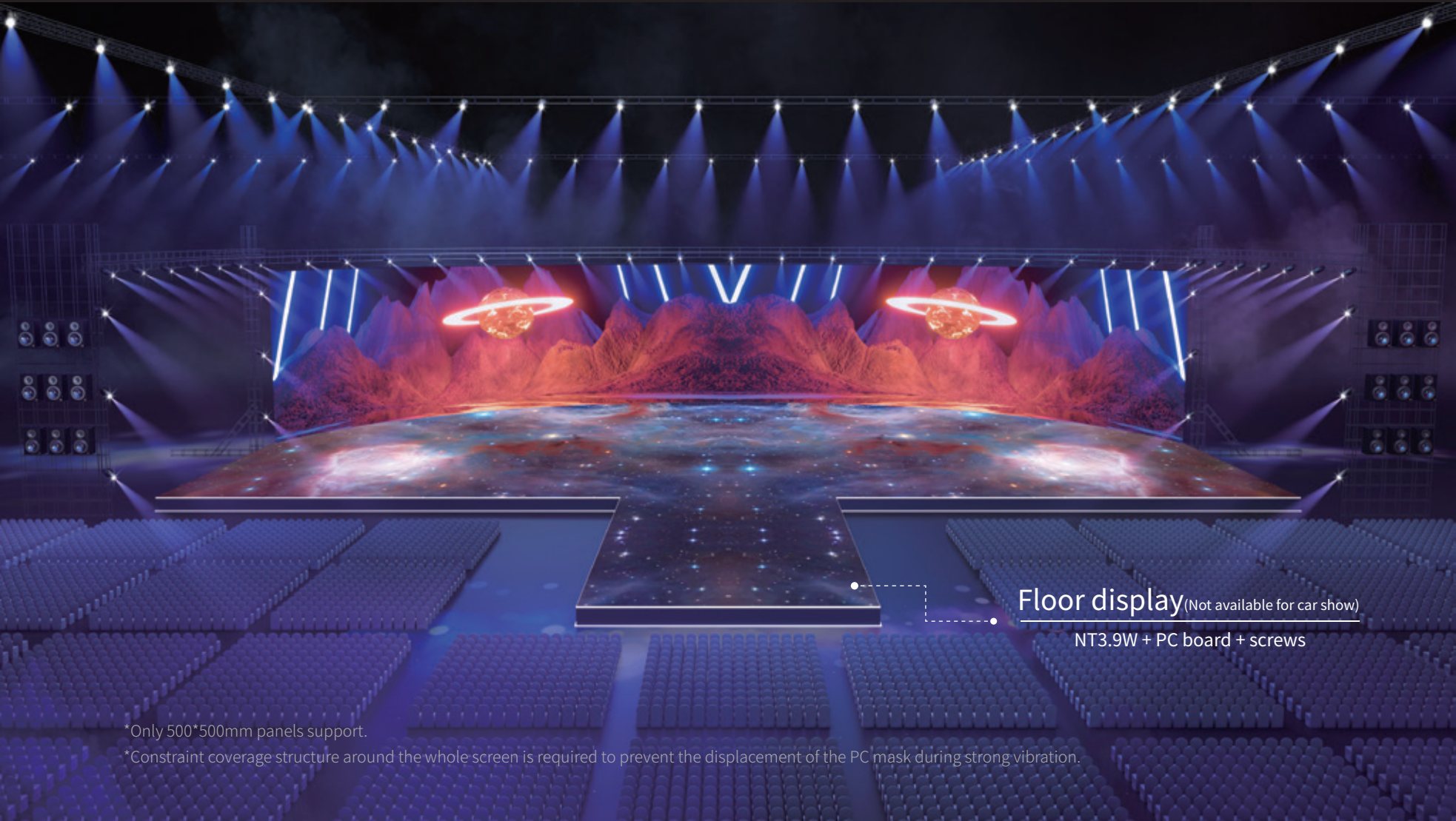


- -7.5° to +10° adjustable
(2.5° per unit)

- Curved connection

Floor display solution

NT3.9W can be customized as a floor display, which adds to the effect of the stage for an immersive viewing experience*



Floor display (Not available for car show)

NT3.9W + PC board + screws

*Only 500*500mm panels support.

*Constraint coverage structure around the whole screen is required to prevent the displacement of the PC mask during strong vibration.

For building perfect xR stage

The NT2.6 XR version product is specially developed for building xR stage backdrops, with dual system configuration and excellent in-camera performance, helping photographers to capture excellent shots.



1200nits

Adjust brightness according to scene

7680Hz

High refresh rate, shooting without scanning lines

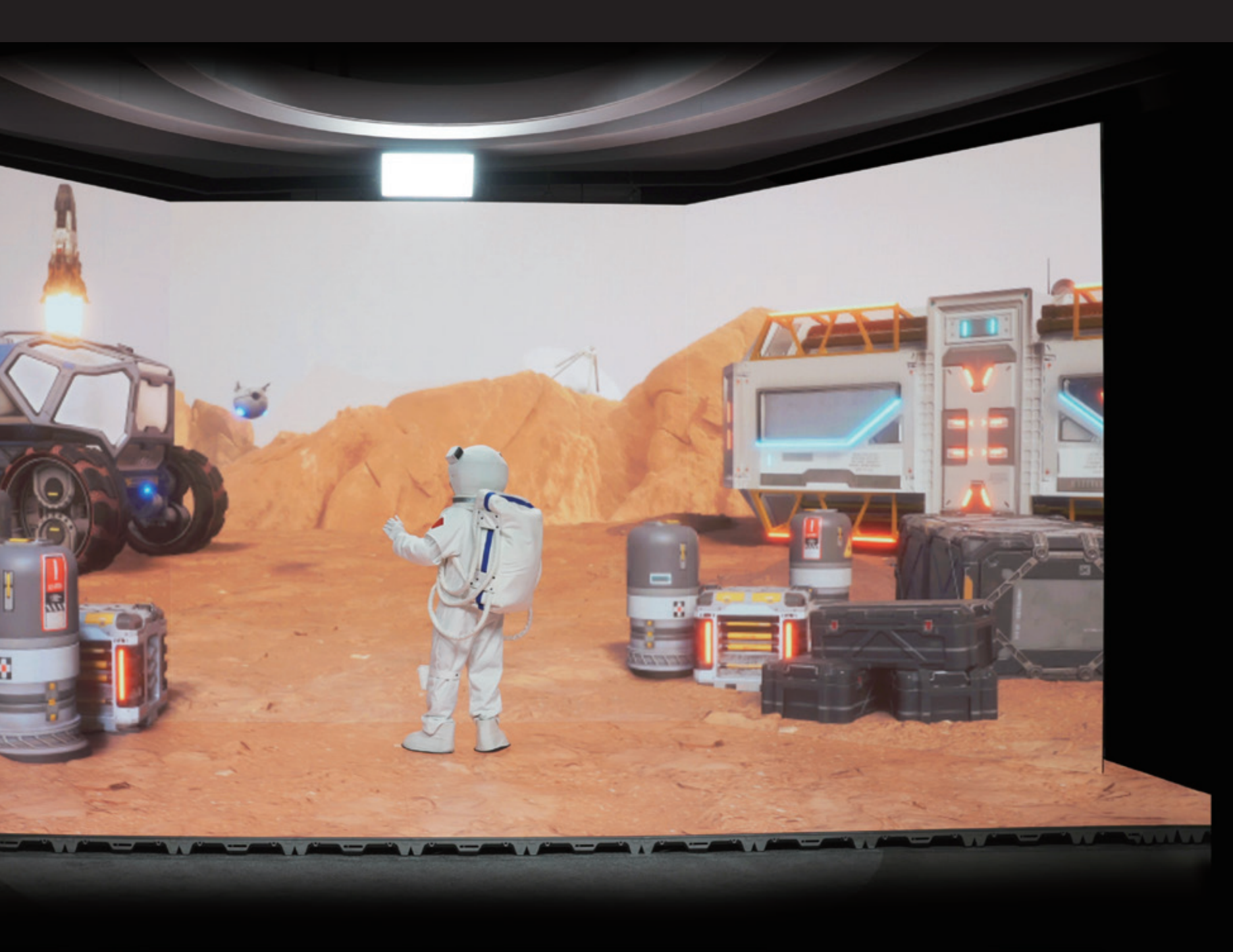
16bit

High grayscale, fine image quality

251Hz (Brompton) / **240Hz** (NovaStar)

Support high frame rate to play video smoothly; combined with frame remapping and other functions, it can realize the recording requirements of shooting the same subject in different backgrounds at the same time, so as to save production cost and time





Cube-shaped display solution

NT series 500x500mm panels provide cube version, which is convenient for customers to build cube-shaped creative displays.





IMMERSIVE
EXPERIENCE

Abyen

Hanging and stacking installation

Hanging and stacking installation solutions are both available to easily cope with the diverse requirements of the site environment.



- Hanging installation with all-black hanging bars



- Stacking installation



Installation with square tube truss

Square tube truss installation is also available, saving more labor and material costs.



● Square tube truss installation*

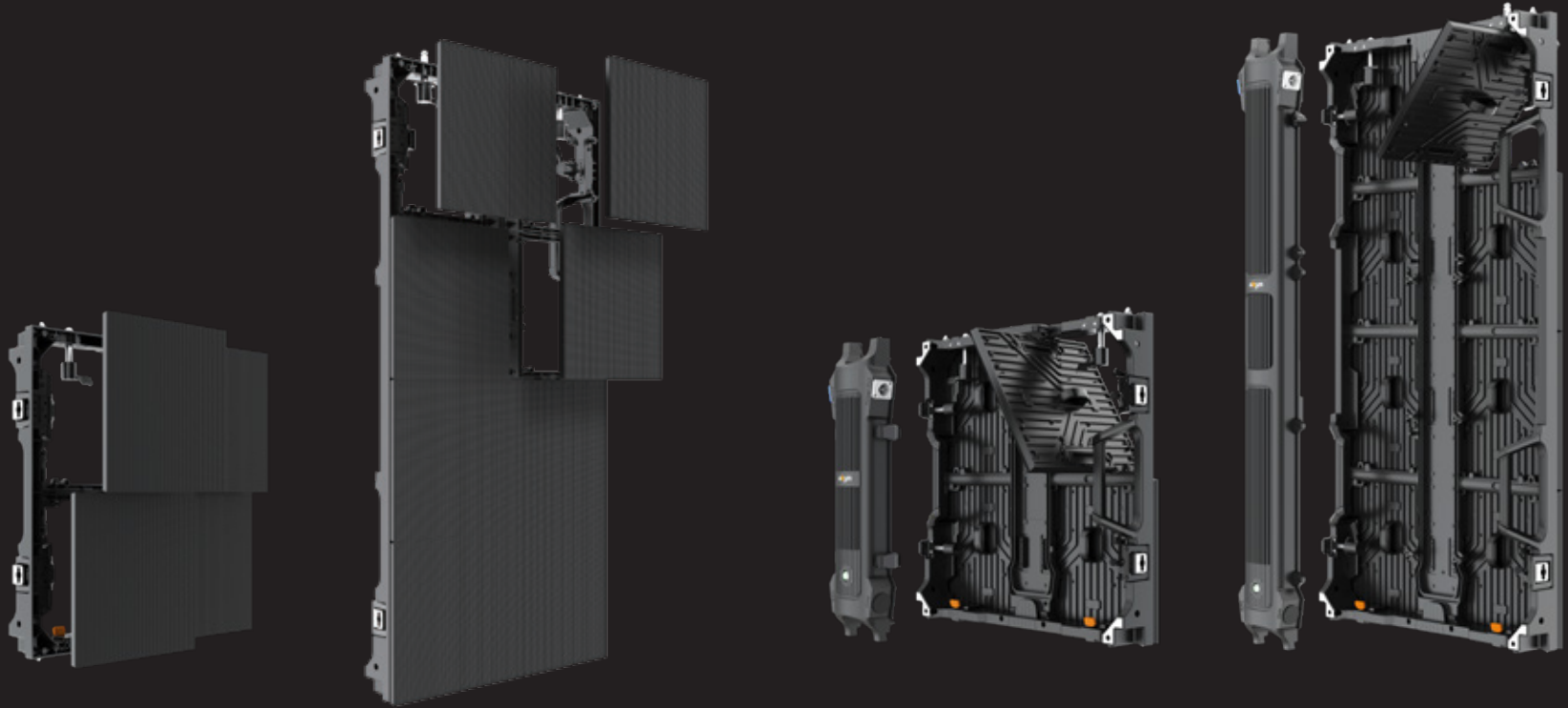


● Holes reserved for tying Nylon cable ties

*Varies with the site conditions

Modular design for easy maintenance

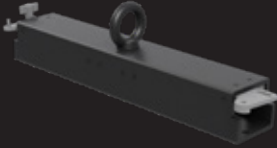
NT series supports front and rear maintenance of modules and power box.



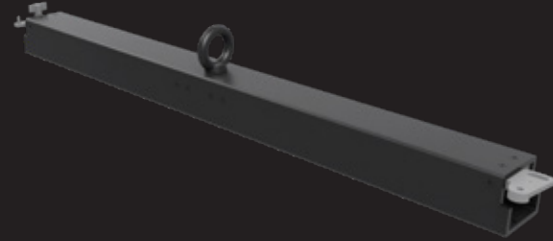
● Front maintenance

● Rear maintenance

Accessories



● 500mm hanging bar



● 1000mm hanging bar



● Stacking system



● Exclusive flight case

Parameters

Parameters	NT2.6 (XR version)	NT2.6	NT2.9		NT3.9W	
Control system	Brompton/NovaStar		NovaStar			
LED type	Black SMD1515	Black SMD1515	Black SMD2020	Black SMD2020	SMD1921	SMD1921
Pixel pitch (mm)	2.6	2.6	2.97	2.97	3.9	3.9
Panel dimensions (WxHxD, mm)	500x500x80	500x500x80	500x500x80	500x1000x80	500x500x80	500x1000x80
Panel resolution	192x192	192x192	168x168	168x336	128x128	128x256
Panel weight (kg)	7.5	7.5	7.5	12.5	8.5	13.5
Panel material	Die casting aluminum					
Module size (WxH, mm)	250 x 250					
Brightness (nit)	1200	1000	1000	1000	4000	4000
Refresh rate (Hz)	7680			3840		
Grayscale (bit)	16			14		
Contrast ratio	6000:1	5500:1	5000:1	5000:1	4000:1	4000:1
Color temperature (K)	6500					
Viewing angle (H/V, °)	160/160	160/160	160/160	160/160	160/150	160/150
Drive mode	1/16	1/24	1/28	1/28	1/16	1/16
AC operating voltage(V)	100~240					
Power consumption (max./avg., W/m ²)	640/214	690/230	498/166	498/166	588/196	588/196
Storage temperature (°C)	- 40~ + 60					
Operating temperature (°C)	- 10~ + 40				- 20~ + 50	
Storage humidity (RH)	10% ~90 %					
Operating humidity (RH)	10% ~90 %					
IP rating	IP40/IP21	IP40/IP21	IP40/IP21	IP40/IP21	IP65/IP54	IP65/IP54
Certification	CE, CCC					

★ Shenzhen Absen Optoelectronic Co., Ltd. reserves the right to modify product design, specifications, and parameters without further notice.
Photos are used for illustration purpose only as products may differ from these photos. All rights reserved by Shenzhen Absen Optoelectronic Co., Ltd.

Absen Optoelectronic Co.,Ltd

18-20F Building 3A, Cloud Park, Bantian Huawei Base,
Longgang District Shenzhen, 518129, P.R.China
T: +86-755-89747399 E: absen@absen.com
F: +86-755-89747599 W: www.absen.com

Absen Inc.

7120 Lake Ellenor Drive, Orlando,
Florida 32809, USA
T: +1-407-203-8870 E: info@usabsen.com
F: +1-407-203-8873 W: www.usabsen.com

Absen GmbH

Hessenring 4c, 64546 Moerfelden-Walldorf (Frankfurt am Main),
Germany
T: +49 (0) 6105 718941-0 E: europe@absen.com
F: +49 (0) 6105 718941-29 W: www.absen-europe.com



Twitter: @LEDAbsen Facebook: @LEDAbsen
LinkedIn: Absen Instagram: absenled